

Anti-BNIP1 Rabbit Monoclonal Antibody
Catalog # ABO13809**Specification**

Anti-BNIP1 Rabbit Monoclonal Antibody - Product Information

Application	WB, IHC
Primary Accession	Q12981
Host	Rabbit
Isotype	Rabbit IgG
Reactivity	Rat, Human, Mouse
Clonality	Monoclonal
Format	Liquid

Description

Anti-BNIP1 Rabbit Monoclonal Antibody . Tested in WB, IHC applications. This antibody reacts with Human, Mouse, Rat.

Anti-BNIP1 Rabbit Monoclonal Antibody - Additional Information

Gene ID 662

Other Names

Vesicle transport protein SEC20, BCL2/adenovirus E1B 19 kDa protein-interacting protein 1, Transformation-related gene 8 protein, TRG-8, BNIP1, NIP1, SEC20L

Calculated MW

26132 MW KDa

Application Details

WB 1:500-1:2000
IHC 1:50-1:200

Subcellular Localization

Mitochondrion. Endoplasmic reticulum membrane; Single-pass type IV membrane protein.

Tissue Specificity

Isoform 1 is highly expressed in heart, brain, liver skeletal muscle and pancreas. Isoform 3 is moderately expressed in placenta, lung and kidney. Isoform 4 is highly expressed in testis and small intestine..

Contents

Rabbit IgG in phosphate buffered saline, pH 7.4, 150mM NaCl, 0.02% sodium azide and 50% glycerol, 0.4-0.5mg/ml BSA.

Immunogen

A synthesized peptide derived from human BNIP1

Purification

Affinity-chromatography

Storage

Store at -20°C for one year. For short term

storage and frequent use, store at 4°C for up to one month. Avoid repeated freeze-thaw cycles.

Anti-BNIP1 Rabbit Monoclonal Antibody - Protein Information

Name BNIP1

Synonyms NIP1, SEC20L

Function

As part of a SNARE complex may be involved in endoplasmic reticulum membranes fusion and be required for the maintenance of endoplasmic reticulum organization (PubMed:15272311). Also plays a role in apoptosis (PubMed:15272311, PubMed:23896122, PubMed:7954800). It is for instance required for endoplasmic reticulum stress-induced apoptosis (PubMed:23896122). As a substrate of RNF185 interacting with SQSTM1, might also be involved in mitochondrial autophagy (Probable).

Cellular Location

Endoplasmic reticulum membrane; Single-pass type IV membrane protein. Mitochondrion membrane; Single-pass type IV membrane protein. Note=Localization to the mitochondrion is regulated by RNF186.

Tissue Location

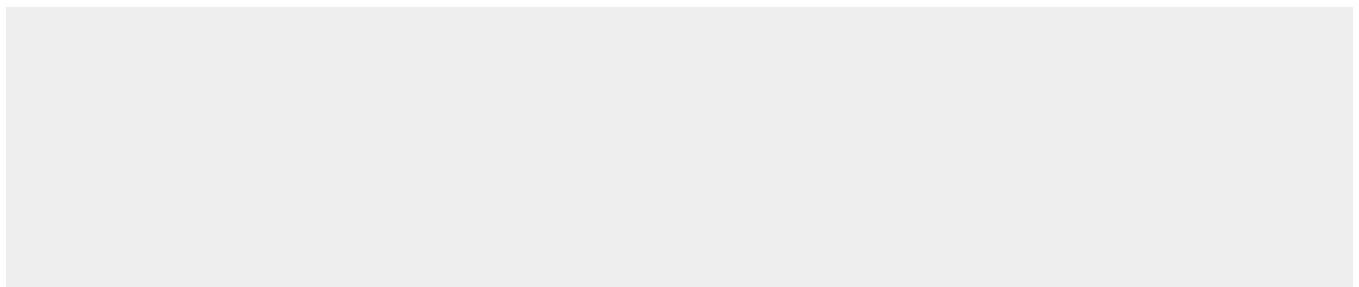
Isoform 1 is highly expressed in heart, brain, liver skeletal muscle and pancreas. Isoform 3 is moderately expressed in placenta, lung and kidney. Isoform 4 is highly expressed in testis and small intestine.

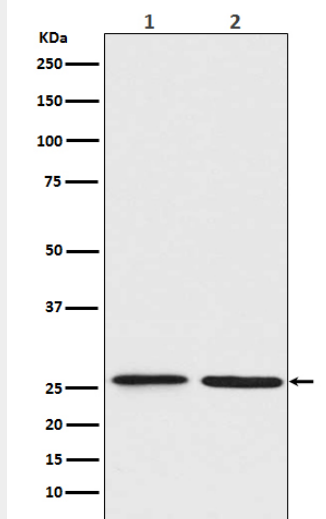
Anti-BNIP1 Rabbit Monoclonal Antibody - Protocols

Provided below are standard protocols that you may find useful for product applications.

- [Western Blot](#)
- [Blocking Peptides](#)
- [Dot Blot](#)
- [Immunohistochemistry](#)
- [Immunofluorescence](#)
- [Immunoprecipitation](#)
- [Flow Cytometry](#)
- [Cell Culture](#)

Anti-BNIP1 Rabbit Monoclonal Antibody - Images





Western blot analysis of BNIP1 expression in (1) Jurkat cell lysate; (2) C6 cell lysate.